

Get ready, get set, it's  
**YARD SALE**  
 time again!



Summit  
 Music Festival  
 returns  
 August 24!  
 See back page.

# Summit News

JUNE 2013

[www.SummitNeighbors.org](http://www.SummitNeighbors.org)

Mark your calendars. The annual opportunity to clear out your attics and basements, plus make some easy money in the process, has been set for Sept. 21 with a rain date of Sept. 28.

It will be from 10 a.m. to 2 p.m. in the yard at the Church of the Redeemer, 655 Hope St. Participants pay \$15 for spots for their own tables or \$20 for SNA-provided ones. Each seller is responsible for his/her own items and keeps all the sale profits.

Musical entertainment is still being worked out, but last year was provided by House Concerts Rhode Island. Food trucks are expected to be at the site for refreshments or lunch. Further information will be in a September newsletter and on the SNA web site.

Last year there were about 30 tables filled with no-longer-needed treasures and enough buyers looking for items they didn't know they needed to make many mutually satisfactory deals.

Not only is the yard sale an opportunity to exchange goods and cash, but it promotes neighborliness and goodwill.

To join the fun, fill out the form below or on the SNA web site at: <http://www.sna.providence.ri.us/summit-yard-sale-2013/>

Please remember to indicate on the form if you want to reserve an SNA table and be sure to provide an email address so we can get back to you. A representative will let you know whether one is available.

Whichever form you use, mail a \$15 check to the Summit Neighborhood Association, Box 41092, Providence, RI 02940 by Sept. 14. If you are renting an SNA table, the additional \$5 will be collected at the yard sale.

.....  
 : I want a space at the 2013 SNA yard sale :  
 : Name \_\_\_\_\_ :  
 : Address \_\_\_\_\_ :  
 : Phone \_\_\_\_\_ :  
 : Email \_\_\_\_\_ :  
 : Please enclose check for \$15. :  
 : Do you want a table? Yes \_\_\_ No \_\_\_ :  
 : Mail to Summit Neighborhood Association, :  
 : Box 41092, Providence, RI 02940 :  
 : ..... :



Crews from the Combined Sewer Overflow Program being run by the Narragansett Bay Commission began repaving Hope Street during April in 500-foot sections such as this one in front of Citizens Bank. According to the contract schedule of the John Rocchio Corp., the work is to be completed by Aug. 15.

## Annual Meeting: Focus on the Future

Members of the Summit Neighborhood Association, at their annual meeting, elected an expanded board of directors, heard reports from elected officials and participated in a wide-ranging discussion of the future of the neighborhood, the city and the state.

Re-elected to the board were Dean Weinberg, president, Jesse Polhemus, vice president and Harriet Hemphill, treasurer. Thomas Schmeling was elected secretary. Also re-elected were Anthony Arrigo, Grant Dulgarian, Howie Gladstone, Claude Goldman, Kerry Kohring, Daniel MacLellan, Britt Page, Sheila Perlow, Mary Ann Rossoni and Peter Sandby-Thomas.

Six new members were elected; you can meet them on page 2.

### City, State Elected Officials Report

Providence Mayor Angel Taveras reported that the city is working on improving snow removal, is preparing for a street-repaving project in the spring and is starting on Hope Street with a new city-wide program of recycling for businesses.

House Speaker Gordon Fox, our local representative, said his promise to get a vote on a marriage-equality bill has been fulfilled and that he is continuing to work on health, education, housing, transparency in government and gun safety.

## Annual Meeting

*continued from p. 1*

Sen. Gayle Goldin said the first bill she cosponsored was on marriage equality and she is supporting legislation to repeal the voter identification law, to expand medical insurance to include family planning and to provide paid leave for people with family problems.

City Councilman Kevin Jackson vowed to continue to fight for the “under-served” by working with the other elected officials from Summit. He said his office has a map available showing the streets to be repaved and that his personal telephone number is 286-4223.

### Neighborhood Thinkers & Residents Tackle the Issues

The panel discussing the future included: Sierra Barter, of the PVD Lady Project; Jon Howard, Cause & Effect, Inc.; Coryndon Luxmoore, Buildium; and Jef Nickerson, Greater City Providence. The group was moderated by Dean Weinberg and Anthony Arrigo.

The panelists seemed to agree that the quality of life in the neighborhood was good and improving, but that more work needed to be done, especially in education and “walkability.”

### Calls for Improved Bus Service

Better public transportation was also urged, as Barter said she wished Providence had “a system that makes sense for people after six o’clock.” In answer to a question from the floor about how to change the mindset about public transit, Luxmoore suggested limiting the availability of parking.

### Schools: Key to Quality of Life

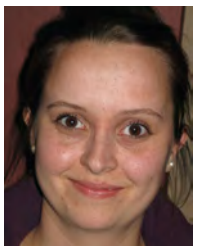
But the school system generated the most reaction from the audience, especially as local schools increase in quality and there is competition for student space. Councilman Jackson said that local schools are supposed to have 80 percent enrollment from the neighborhood but that is not always happening. Howard said residents have to face the problems and he was amazed that “the citizens of Providence are not mobilized around the issue of horrendous education policy.”

Weinberg invited all Summit residents to attend the regular meetings of the board of directors at 7 p.m. on the third Monday of every month at Summit Commons.

## Newly Elected to the Board



**Jim Barfoot**, 68, has lived on 12th Street for 35 years and in the neighborhood for more than 40. He is semi-retired from more than 30 years as an industrial designer/design engineer for a variety of products and as a kitchen designer at Home Depot for four years. He volunteers with the Science Olympiad at Nathan Bishop School plus singing in the choir and working in community-based activities at the Unitarian Church on Benefit Street. He has graphic-design skills and has maintained the SNA membership database since 2007.



**Sierra Barter**, 26, lives on Colonial Road and has been in Summit for two years. She is a social-media coordinator at Johnson & Wales University and is co-founder of the PVD Lady Project. She volunteers with the Wilbury Group, PAWS New England and Girls on the Run RI. Sierra says she has special skills in social media and marketing as well as event planning and promotion. She says she would like to bring more young people to the neighborhood, which she loves.



**Daren Bulley**, 42, lives on Rochambeau Avenue and has been a Summit resident for eight years. He is the owner/chef of Divine Providence Catering. He also volunteers at Providence Hebrew Day School and Sha’arei Tefilah Synagogue plus has worked from 2007 to 2010 to increase access to healthy foods in public schools. Daren says he is interested in increasing public safety and reducing theft in the neighborhood.



**Martha Fraenkel**, 62, lives on Chace Avenue and has been a Summit neighbor for a year. She is a land-use planner and brings expertise in zoning and horticulture/gardening as well as solid-waste management and recycling



**Anneliese Greenier**, 75, lives on 9th Street and has been in Summit for 31 years. She is a retired data archivist and has been active in the SNA for years, doing newsletter bagging, official mail pickup and delivery to appropriate board members and has been a representative to the North Main Street Merchants Association.



**Joan Retsinas**, 66, lives on Taber Avenue and has been an East Side resident for 28 years, having lived in Oak Hill for 12 years before that. She is an editor who also volunteers at the League of Women Voters and the Library Board of Rhode Island. Joan says she has experience in writing, making phone calls and distributing flyers in support of neighborhood-binding events.

## What’s Your View on Community Garden Plan?

The proposal to build community gardens alongside playground equipment in the city’s “tot lot” on Summit Avenue has drawn much community support – and some opposition.

The Parks Department strongly backs public use of its land for growing food and has committed to participate in an upgrade of the entire tot lot to blend playground with garden. However, the city will not move forward without neighborhood support.

Although the SNA has done opinion surveys before showing support for gardens in the tot lot, some neighbors have objected. To further gauge community feelings, the SNA and the Parks Department have created a new survey, available on the SNA’s web site at this address: <http://www.summitneighbors.org/ParkSurvey>

Both SNA and the Parks Department urge all residents to participate in the survey. The results will be analyzed to determine the future of gardening in the tot lot.

# Business Profiles

## Max Formal Co.



Max Formal Co., a wholesaler and retailer of dry goods, uniforms, towels and bedding, began life in 1953 as a

store-front operation with the founder's name.

Today, from the brick building Paul Formal, Max's son, constructed at 1164 North Main St., the business sells to department stores, mass and general merchandisers and interior decorators as well as distributing linens to hotels, motels, nursing homes, clubs, hospitals and other institutions.

Products from the self-described "rather nondescript" store have even appeared on television with singing star Cher, says Paul Formal, who, with his wife, Debbie, has turned the business into a global enterprise.

But they remain locally rooted. "We would like to see more mom-and-pop type of businesses and restaurants in the neighborhood," said Paul, who is involved with the Dollars for Scholars program, which began at Hope High School and supports scholarships across America. He has also helped raise money for computers at Hope High and is on the boards of several college committees

Paul, a graduate of Temple University, and Debbie, a graduate of the University of Rhode Island, share an interest in the arts and have an association with Rhode Island School of Design. They have worked with Shepard Fairey, the RISD-educated graphic designer and illustrator who developed the iconic Barack Obama "Hope" poster, and his graphics are now used on their building, stationary and catalogues.

The business carries linens, work clothing, active wear and bedding plus screen printing and embroidery with brand names such as Addidas, Champion, Dickies, Fruit of the Loom, Hanes, Izod, Jerzees, New Balance and Van Heusen.

For more information, go to [www.max-formal.com](http://www.max-formal.com) or call (401) 421-3268

By *Howie Gladstone, SNA contributing writer*

## Ocean Tides School

Ocean Tides is a charter school for at-risk boys that uniquely incorporates traditional academia with hands-on vocational training. The Providence campus is here in the Summit neighborhood, along with residential housing.



The school started in Narragansett and opened the satellite location at 260 Highland Ave. several years ago as an alternative day school in grades 9-12. It offers a full high-school diploma through the state Department of Education.

Classes plus hands-on workshops include carpentry/woodworking, culinary arts, plumbing, electrical wiring, landscape architecture and horticulture.

The decision to have a branch in Summit was based on its central location in the city as well as the availability of a building, the former St. Raymond's School. Two local homes were purchased to house many of the students, as well as to provide additional workshop space.

The staff members at Ocean Tides are college-trained professionals who are committed to the welfare of each and every student.

Several local businesses collaborate with the school and have brought students on board, including Groudworks Providence, The Miriam Hospital, Summit Commons and The Sandwich Hut.

Gary Comunale, the school's vocational guidance counselor, says he welcomes local businesses and residents to tour the facility, to meet with the personnel and to see how the students training there can be of benefit to the community, on a business or personal level

For more information visit [OceanTides.org](http://OceanTides.org), or call Comunale at (401)861-3778.

# New Trees on N. Main & Hope

There are now dozens of new trees along Hope and North Main streets – thanks to cooperative efforts by the city Department of Parks and Recreation and Summit neighbors.

On April 8, city crews cut eight new tree pits through the sidewalks along Hope Street and put in new soil. Then they added the trees, including four in front of the Rochambeau Library branch. The site selection was done in cooperation with the Hope Street Merchants Association.

Then, on April 13, city crews delivered trees along North Main Street to about 20 neighborhood volunteers, including SNA members, who dug the holes, planted the trees and spread the mulch. A total of 25 trees were put in, including some on streets intersecting North Main. Whole Foods Market provided goody bags for the workers.

The effort was supervised by City Forester Douglas Still and coordinated by George Harvey of Groundwork Providence. It was part of the Providence Neighborhood Planting Program (PNPP), a street-tree planting partnership of the Mary Elizabeth Sharpe Street Tree Endowment, the city and its residents.

The new trees might not look like much now, but are a legacy of beauty, shade and clean air to future generations.



*Newly planted trees in front of the Rochambeau Library.*

# First Summit Easter Egg Hunt

On the Saturday morning before Easter, more than 100 neighborhood youngsters fanned out in Lippitt Park to hunt for eggs.

In a first-time venture for the Summit Neighborhood Association, a total of about 2,000 plastic Easter eggs were scattered in three zones – marked off by yellow tape – for children to search and crack open eggs with prizes ranging from jellybeans and candy to gift certificates for local merchants.



There was a section for toddlers up to two years old (where the eggs didn't contain anything so there would be no choking hazards), one for kids two to four years old and one for those older than four. Special eggs had tickets inside that were redeemed at the registration table near the park's fountain for larger gifts and the certificates from Three Sisters, Frog & Toad, Kreatelier and Creatoyvity.

A total of 134 children were registered, beginning at 8:30 for the hunt that began at 10. Each child got a green admission wrist bracelet, some of which were presented by Cara Jayne Lustig, Miss Rhode Island United States 2013, wear-

ing her badge of office, a jeweled tiara. Unfortunately, there was some confusion about which children should be where when the searching started.

Eggs in the older kids' section were quickly gathered up and the eager hunters spilled over into the toddler area, resulting in empty eggs in some baskets. Within about 10 minutes, all the eggs "hidden" in all the zones had been discovered.

As the finders of the special eggs were turning in the tickets for their prizes, Mayor Angel Taveras arrived to congratulate the participants and mingle with his constituents. The mayor and Miss Rhode Island posed for pictures with several of the green-shirted SNA volunteers plus other people enjoying the beautiful spring day. Food trucks parked along the adjacent streets offered the opportunity for lunch in the park.

Event organizers acknowledged some difficulties with the process and encourage neighborhood residents to make suggestions on the SNA listserv about how to do it better next year.

# Summit Music Festival Set for Aug. 24

The 2013 Summit Music Festival returns for its fourth year from 1 to 5 p.m., Saturday, Aug. 24, in Lippitt Park, at Blackstone Boulevard and Hope Street.

The event, which in the past has brought groups such as Smith & Weeden, The Mighty Good Boys and Mamadou, will feature live bands, crafts and food vendors plus special music and activities for kids and a beer and wine garden for adults.

The festivities are sponsored by SNA, City of Providence and local businesses. If you are interested in becoming a sponsor or vendor, please email [SNAProv@gmail.com](mailto:SNAProv@gmail.com)

Mark your calendar and save the date!



Hundreds of people enjoyed last year's Music Festival.

## Join SNA or renew your Membership!

I enclose my 2013 membership contribution of  \$15  \$25  \$50 Other \$

Name (print)  email

Name 2  email

Address

Daytime Phone  Evening Phone

I can help  Deliver Newsletters  Make phone calls  Canvas my street  other

My biggest neighborhood concerns are:

Please enclose a check made out to: Summit Neighborhood Association  
Mail to: SNA, PO Box 41092, Providence, RI, 02940