



The Narragansett Bay Commission

COMBINED SEWER OVERFLOW PROGRAM



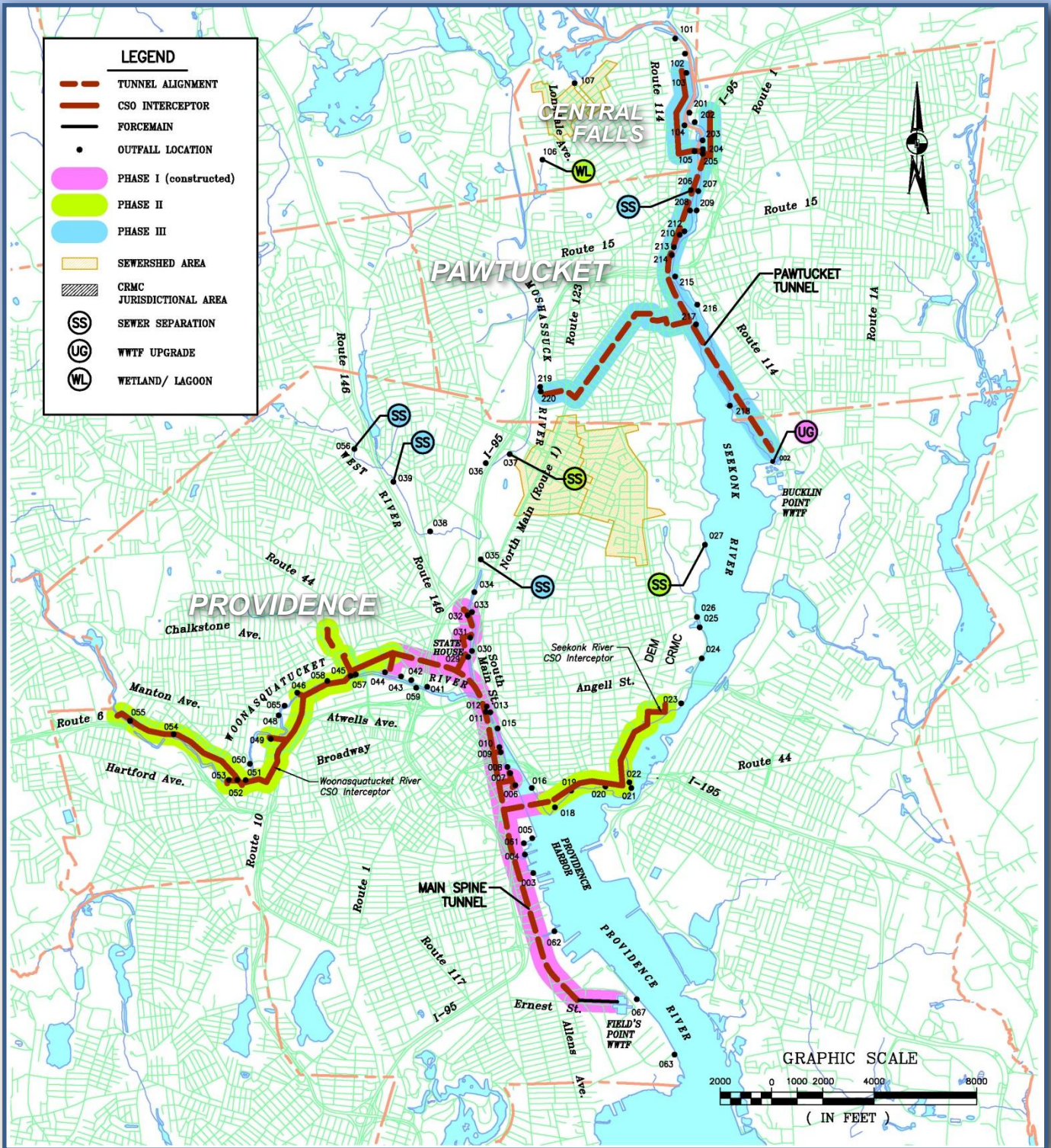
The Louis Berger Group, Inc.
Program Manager

COMBINED SEWER OVERFLOW PROGRAM

- **Required by 1972 Clean Water act (CWA)**
- **Rhode Island DEM Policy**
“Eliminate Overflows from the 3 month storm” (1.64 inches of rain in 6 hours)
- **Capture/Store/Treat (Tunnel)**
- **Separation (Remove Storm Flow)**
- **Other (Wet Lands)**



CSO PROGRAM



CSO Program Phase II

The Louis Berger
Group, Inc.



CSO PROGRAM – PHASE I

- **Completed November 2008**
- **More Than 4 Billion Gallons Capture/Treated**
- **Significant Improvement In Water Quality**



PHASE II

- **Construction Started August 2011**
- **12 Contracts in Providence**
- **1 Contract in Central Falls**
- **Estimated Completion 1st Q 2015**



CONTRACT 303.05C (OF 027)

- **1 Of 4 Underway**
- **Separation By Creating Additional Storm Drain Capacity**
- **Schedule As Indicated On Map**



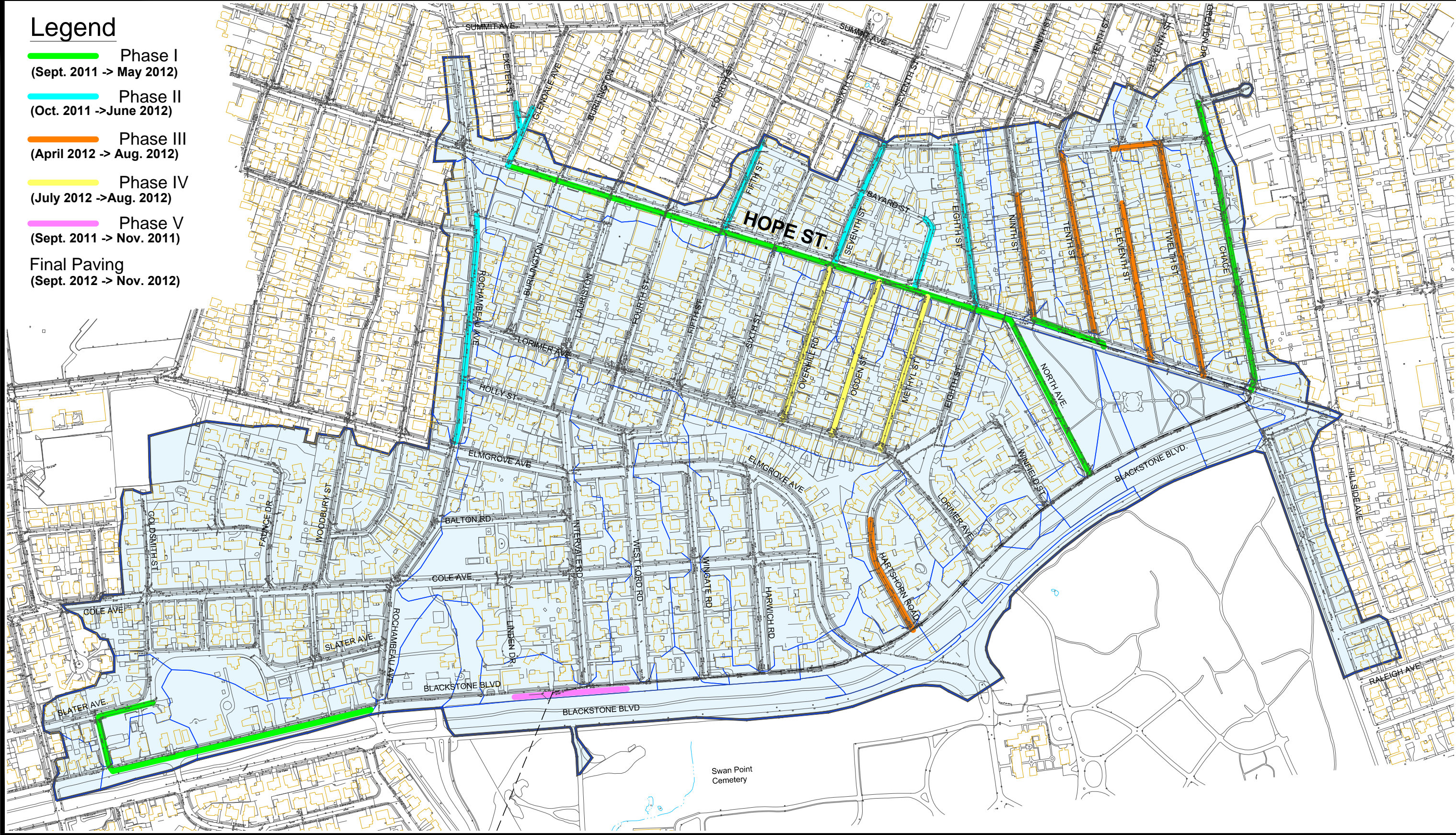
SEPARATION (Remove Storm Flow)

- **New Storm Drains/Catch Basins/Man Holes**
- **Relocate Utilities**
 - **Gas**
 - **Water**
- **Paving**
- **Traffic Control/Management**



Legend

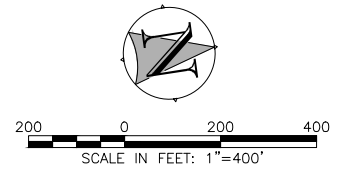
- Phase I
(Sept. 2011 -> May 2012)
- Phase II
(Oct. 2011 -> June 2012)
- Phase III
(April 2012 -> Aug. 2012)
- Phase IV
(July 2012 -> Aug. 2012)
- Phase V
(Sept. 2011 -> Nov. 2011)
- Final Paving
(Sept. 2012 -> Nov. 2012)



F:\PROJECT\NBC\Phase II\Sewer Separation\BETA MAPS\3519 Conceptual OF027-3_AG.dwg



The NARRAGANSETT BAY COMMISSION
COMBINED SEWER OVERFLOW
CONTROL FACILITIES PROGRAM



CONSTRUCTION PHASES
OF-027 AREA

The LOUIS BERGER GROUP, Inc.
PROGRAM MANAGER



CONSTRUCTION/DUST ISSUES

- **Contractor Working Multiple Crews**
- **Pipe/Catch Basins**
- **Dry April/Early May**
- **Use Of Street Sweeper/CaCL**
- **Temporary Road Patches On Friday**
- **Final Paving Starts in August**



RESTRICTIONS ON CONTRACTORS

- **No Work on Hope Street (November 1- January 1)**
- **No Water By Pass (November 1 – April 1)**
- **Providence Police – Traffic Control**
- **90 Day Wait Prior To Final Paving**



PAVING

- **Patch as Work Progress**
- **Full Width Reconstruction**
 - **All Disturbed Areas**
 - **Curb To Curb**



INFORMATION

NBC Website **WWW.NARRABAY.COM**

Jamie Sammons **jsamons@narrabay.com**
401.461.8848x377

Hangar Notices



KEY PERSONEL

Jamie Sammons

jsamons@narrabay.com

NBC Public Affairs

401.461.8848x377

Craig Cooley

Onsite

401.439.1104

Steve Chmura

Onsite

401.255.2022

John Bigden

Contractor

401.255.3768

Kevin Aguiar

Resident Engineer

401.258.9331

Joe Pratt

jpratt@louisberger.com

Program Manager

401.415.9454

