

68

66

67

67

69



DUNCAN AV.

JENKINS

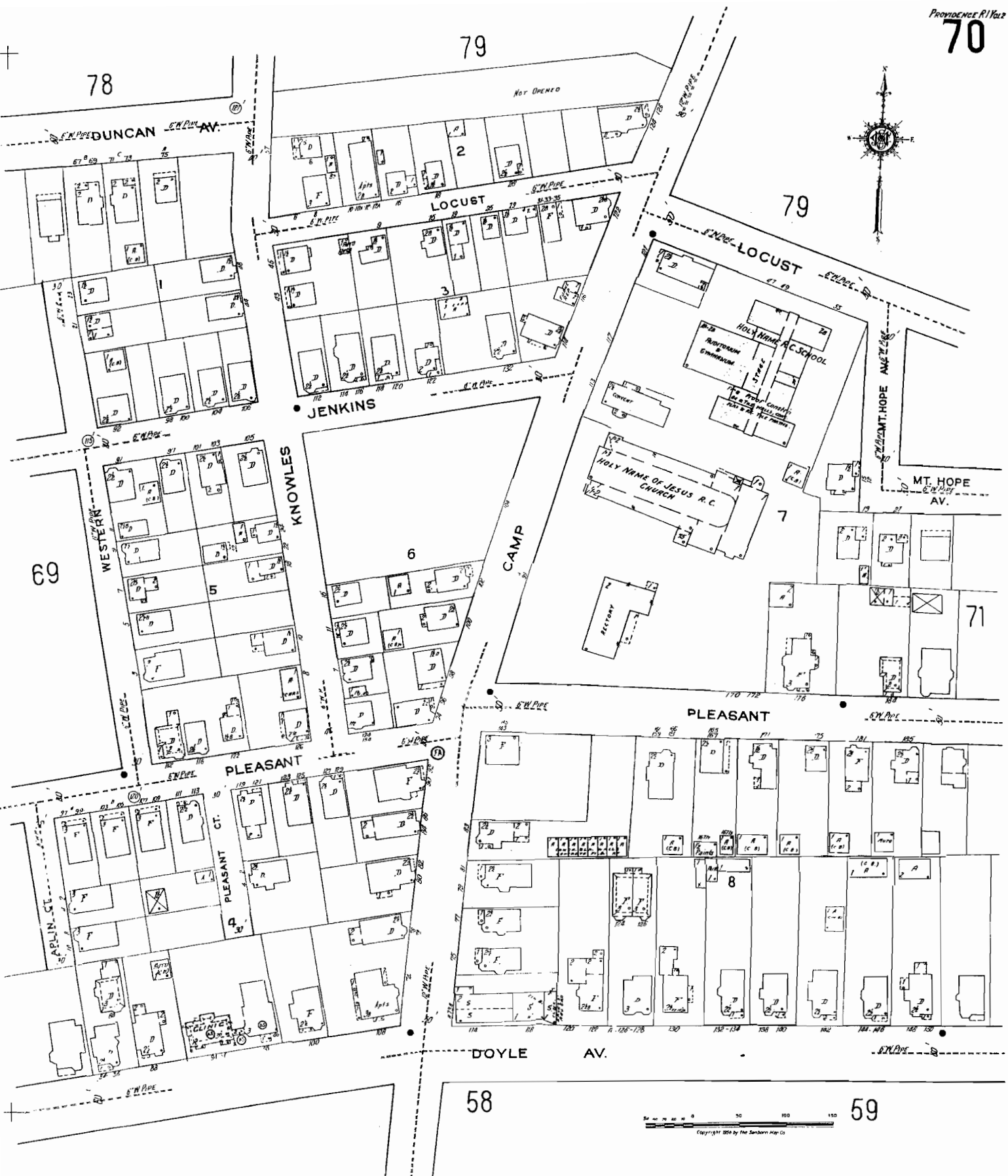
N. MAIN

JENKINS ST. PUBLIC SCHOOL  
CORRIDOR  
BUILT 1930

PLEASANT

DOYLE AV.





31

71

79

70

80

72

CYPRESS

LOCUST

MT. HOPE AV.

PLEASANT

DOYLE AV.

59



**RHODE ISLAND INSTITUTE FOR DEAF**

MANUAL TRAINING SCHOOL

AUDITORIUM

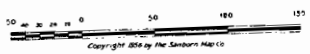
TEACHERS QTR.

3

**SECOND PRESBYTERIAN CHURCH**

**13**

**14**



MT. HOPE AV.

HOPEDALE RD.

HOPE

PHILLIPS

OBSERVATORY AV.

FRONTON PL.

SILVER CT.

