

Summit For Sale 3.0

By Jesse Polhemus
SNA contributing writer

This time, we think we've got it right! Over the past few years, SNA has changed the format of Summit For Sale, our annual yard sale, trying to make the experience easier and more fun – whether you're a seller, a buyer or just someone who enjoys spending time with neighbors poking through long-forgotten treasures.

Last year's sale took place at about two dozen individual sites around the neighborhood. If yours was on the edges of the map, you may have felt like you had a hard time getting people to visit. We think we've fixed that.

This year, we're holding a massive combined yard sale from 10 a.m. to 2 p.m. Sept. 29 at the Church of the Redeemer, 655 Hope St. For \$15, you can rent a space from us and sell anything you like. For \$20, we'll even provide you with a table. (Tables are first-come, first-served, but if we run out, we'll refund your extra \$5.) You can price your items however you want, and any profits are yours to keep.

In addition, we'll also be providing live music by talented local musicians plus unique and delicious fare from area food trucks.

By surrounding yourself with many other eager sellers, you're increasing your chances of getting your items seen and sold as buyers will be attracted to one easily accessible location. It's not just a yard sale, it's an event, so come join us!

Just fill out the form below and return it with a check to Summit Neighborhood Association, Box 41092, Providence, RI 02940.

.....
 I want a space at Summit For Sale 2012!

 Name _____
 Address _____
 Phone _____
 Email _____

 Check enclosed:
 \$15/person or family;
 \$20 with table



Summit News

MAY 2012

www.SummitNeighbors.org

Ready or Not: Here Comes Overnight Parking

By Kerry Kohring, SNA Contributing Writer

The city is unilaterally instituting overnight on-street parking throughout the city without the approval of residents or their elected representatives, the City Council.

According to the city's web site, what began last year on the West End as a "pilot overnight parking program" will be expanded to all other parts of the city "through the spring and summer, neighborhood by neighborhood."

There is no specific timetable as yet for implementation in the Summit neighborhood, but when it comes, this is what will happen.

"A window sticker will be provided, and must be applied to the upper left hand corner of the rear window. Once the permit sticker is applied, residents can park overnight in a legal spot on a street designated by street signs as an 'overnight parking' street. Street signs will read, NO PARKING 2:00 AM TO 5:00 AM EXCEPT BY RESIDENT PERMIT," the web site says.

This means that any vehicle with a sticker may park overnight anywhere on a designated street anywhere in the city without regard

to the wishes of the people who live on that street. There is no indication as to how the city chose which streets are to be included, but there is an "opt-out" provision that requires "signatures from two thirds of the residents on that street declaring they choose

to not participate." Anyone seeking to exempt a street will be responsible for collecting the signatures of two thirds of the residents of the entire street, not just a block or two.

A color-coded map of the streets of Summit and their classification as to no parking, parking on one side and parking on both sides is available on the SNA web site.



Dawn in the West End and Federal Hill, where the overnight parking ban has been lifted, finds the streets lined with cars.

The permits are \$100 per year, "with a limit of two permits per household/unit. Buildings with six units or more will not be eligible for the program unless they can demonstrate a significant hardship (lack of off-street parking)." Under these rules, any building that does not now have adequate off-street space will be allowed to park two vehicles per unit on any street simply by declaring that it doesn't have room to accommodate them.

Letter To the Editor

The Highland Court yard, the old “lots,” has been cleared up a bit. The gardeners, or the clean-up crew, pushed the fallen trunks and limbs and broken branches up toward the last remaining barn on Third Street at the corner of Creston Way. Skunks, possums and probably rats nest, hide, lurk, under the pile, and then investigate your recyclables on Sunday evenings. Some of us on the block have tried to reach our councilman to get him to urge the owners of Highland Court to remove the remaining dead, unsightly trees, and to groom that wedge of land that could instead become a neighborhood patch of wildflowers, herbs, or any pleasant groundcover that might offer a view with some degree of charm from our back windows throughout the seasons. A souvenir, at least, of the grandeur of the orchard/pasture that was and is no more.

Mike Fink

Creston Way resident since 1936

Summit News appreciates letters to the editor.

Please send to sna@sna.providence.ri.us

SNA board rejects restrictions on farmers' market parking

Representatives of the farmers' market held on Wednesdays and Saturdays in Lippitt Park at the intersection of Hope Street and Blackstone Blvd. reported to the SNA board that there have been complaints about congestion, resulting in several proposals to regulate parking, including the city setting time limits and ticketing violators.

The board discussed the alleged problem and concluded that it was a non-issue since there is plenty of parking around the market perimeter, on side streets and in unused public lots. Given that the market operates in an urban environment and that there is a valuable sense of community interaction taking place, the board urges that no city action be taken and that participants keep their neighbors in mind when enjoying the offerings. If you agree or disagree with this advisory action, please contact the board at sna@sna.providence.ri.us.

The farmers are also seeking a student-age person to put out traffic cones on market days; if interested, contact market manager Bevan Linsley at BevanLinsley@verizon.net or (401) 932-9007.

Overnight Parking: SNA Demands Public Voice (continued from p. 1)

Further, the web site declares, the program will provide “an economic boost to property owners and realtors who historically have difficulty finding tenants when they don't have a driveway or parking lot to offer.” This implies that landlords who are now limited as to the number of units in a rental property will be able to cram more into a building by putting two cars per unit on the street.

In addition, there will be \$25 guest passes that will allow an additional car per household unit to be parked on the street “up to five times per month.” The current practice of calling the police to request that an overnight guest not be ticketed will no longer be allowed. The resident must be a part of the overnight parking program in order to have an overnight guest.

To obtain the overall permit, residents will be required to go to Providence Municipal Court at the Public Safety Complex, 325 Washington St., “with a valid, original Rhode Island registration that shows the address of a street in the pilot parking area.” Any outstanding tickets on the vehicle registration must be paid and residents “will be required to provide a valid email and/or cell phone number that the city will use to pro-

vide parkers with information about parking bans during snow storm and other weather events.”

Holders of the permits “will be advised whenever a snow emergency or other parking ban is declared, and will be responsible for removing their cars from the street for the duration of the ban. Vehicles parked on a designated street from 2-5 a.m. during a parking ban are subject to a \$20 citation.”

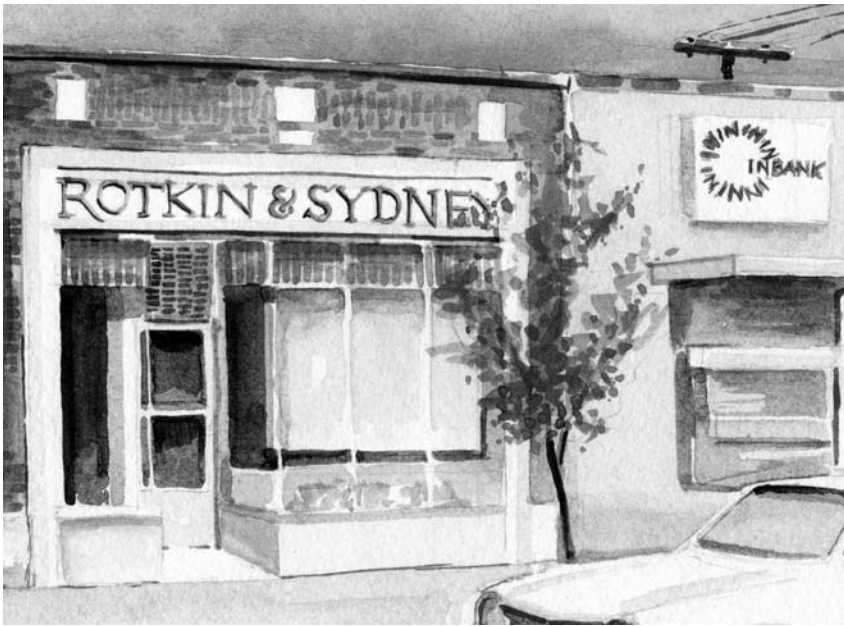


The city's web site declares that the program, supported by Mayor Angel Taveras, will provide “an economic boost, improve the quality of life for many who live in the city and make Providence a greener city.” It doesn't address how bringing more cars onto city streets will make Providence greener.

The web site announcement also doesn't allow for citizen input in the decision-making process. It states only that “The city's Parking Administrator will conduct a series of information sessions in affected neighborhoods (to) explain expansion of overnight parking and answer any questions.” The Providence City Council, openly divided on the plan, has declined to endorse it.

The Summit Neighborhood Association Board of Directors, at its meeting April 23, voted to poll neighborhood residents as to the desirability of lifting the long-standing overnight-parking ban and the provision of setting only an “opt-out” procedure. Complete results of the poll are not in yet, but will be published on the SNA web site.

The board also directed its president to convey to the mayor and other neighborhood organizations three points: That the SNA board disapproves of bypassing the City Council on expanding the “pilot project” of lifting the ban city wide; that the board supports transparency in the decision process; and that the board demands a public voice in that process.



Hope Street Then and Now

By Mary Ann Rossoni
SNA contributing writer

Over time, Hope Street has slowly become THE place to stroll, shop and dine for Summit neighbors and visitors. In addition to a multitude of restaurants to satisfy any palate, the street has a host of gift stores and boutiques. One such, yet not so typical, is Studio Hop.

Owners Nina and Peter Tegu opened the store in 2000 and introduced a wide selection of unique gift items. They have made it their goal to seek out, and actually curate, their unique inventory of goods.

Much of what they offer is created by local artists and artisans – paintings by C.C Wolf and Michael Carr, ceramics by Loren Chen and Asya Palatova, mosaics by Jess Regelson; vintage glass jewelry by Ellen Mayer and Helen Guidero and brushed aluminum photographs by Nancy Reid Carr.

Studio Hop, at 810 Hope St., also puts a new

spin on the “renew-recycle-reuse” concept. When you go to the back of the store, you will find tastefully chosen and carefully displayed antique items for sale. In addition to art and antiques, there is a modest selection of Victorian to mid-century modern vintage jewelry plus hand-sewn books and olive oil-based skin-care products from 80 Acres.

For last-minute shoppers such as myself, “The Hop” has never failed in my hour of emergency gift-buying need to offer a broad selection of items at reasonable prices. Running late for that party? Not to worry, they also gladly gift wrap.

The site has always drawn an eclectic crowd. Many new Summit neighbors may not know that Studio Hop was once a coffee shop called Adam & Steve’s, followed by a coffee-house with music called Gallery Café. But before all of that, it was Rotkin & Sydney Realtors, owned by Ralph Rotkin and Miles Sydney. In the 1980s the commercial realty duo sold the firm to Hilary and Steve Salk

forming Salk, Rotkin & Sydney, which later became Salk Real Estate.

Steve, Hilary, their agents (myself included) and secretary Claire Engel handled many real-estate transactions all over the East Side. Hilary, also a writer and community organizer, was one of the first contributing writers to the pioneering women’s health book “Our Bodies, Ourselves.” She also made a run for governor in 1982. She and Steve raised their family here on the East Side and have since semi-retired to South County with a place in Manhattan.

Where you once walked past the windows and saw six teak desks, three on either side of the office, with phone-to-ear realtors, you now see colorful summer dresses, paintings and curious gift items.

You may no longer be able to enter into a purchase-and-sale agreement at 810 Hope, but you can certainly purchase some unique and wonderful items for your home and those you love.



What’s Going On Down There?

As you’ve made the ever-changing detours around the Hope St. construction project, have you wondered what they’re doing? It’s a massive water quality project to separate storm drains from the sewers, and it involves major underground construction.

Summit neighbor Elianna Bresler, who lives right in the middle of the action, has recorded it in a series of fascinating photos. You can see them all, along with her enlightening and entertaining comments, at <http://tinyurl.com/6tregfr> Images ©2012 E Bresler



Summit Business Profiles

By Howie Gladstone, SNA contributing writer

LuLi Boutique



Step into the world of this funky boutique of women's clothing and accessories on Hope Street and you'll find merchandise not available in a standard suburban mall.

Elise Mischel, proprietor, lives just outside the Summit area but opened her

shop here about a year ago to offer hip clothing, as well as her own line of jewelry, at reasonable prices.

She features designer styles such as Cut Loose and Moontide Dyers plus jewelry by Aylaya Bar (Israeli imports). Work by local artists and designers are also offered along with trunk shows at the store.

Educated in New York City with a flair for retailing, Mischel took advantage of the location – 782 Hope St., next door to Citizens Bank's driveway – to feature her vision of bright and colorful styles. She says she tries to promote a cheerful, positive energy for customers of this specialty establishment for women.

In June, the store celebrates its first anniversary in the neighborhood. The shop has a web site <http://www.LuLiBoutique.com> and is on Facebook with notices of coming events and sales.

Asked what she thought would augment the already plentiful retail atmosphere in Summit, Mischel said, "A hip-style kids' store – not likely to be found at a mall – would be a welcome addition within the area."

Jerry's Citgo



In today's fast-moving society, finding a "full-service" gas station such as Jerry's Citgo is quite unusual.

Owner Peter Bennett took over the family operation in 1947 and quickly learned the ins and outs of automotive maintenance.

Although now retired, he says he still has a crew of workers who pride themselves on both experience and honesty, which in turn goes a long way with their many customers.

Familiarity, another plus for patrons, is another trait at this station at 1101 Hope St., the intersection of Blackstone Boulevard and Hope, as the turnover of help is very low.

Unlike most service stations, that basically just sell fuel, the staff at Jerry's will also pump it for you and clean your windshields. They will also bring to your attention anything that could improve your driving experience or compromise your safety. The owner says, "If for some reason Jerry's cannot service an automobile, we will recommend someone who can."

Although currently living outside the Summit neighborhood, Bennett generously assists in the distribution of SNA newsletters.

Join SNA or renew your Membership!

I enclose my 2012 membership contribution of \$15 \$25 \$50 Other \$

Name (print) email

Name 2 email

Address

Daytime Phone Evening Phone

I can help Deliver Newsletters Make phone calls Canvas my street other

My biggest neighborhood concerns are:

Please enclose a check made out to: Summit Neighborhood Association
Mail to: SNA, PO Box 41092, Providence, RI, 02940